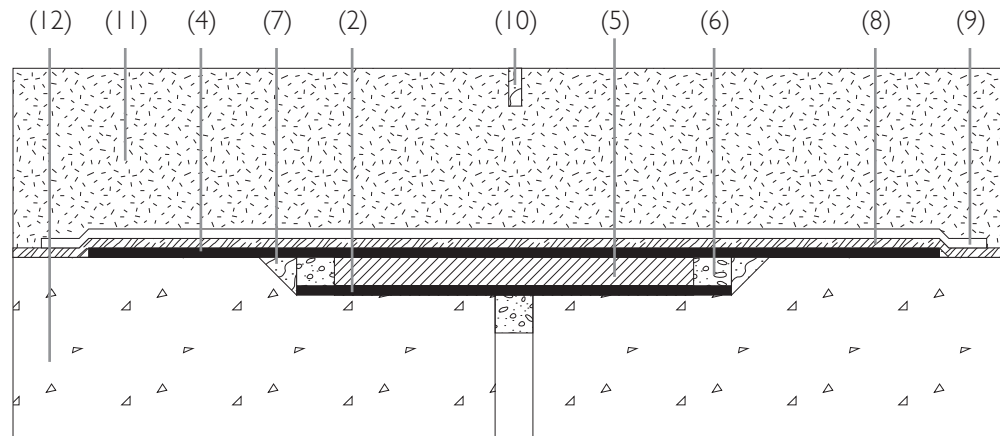


BURIED JOINT DETAIL FOR MOVEMENTS UP TO 10mm



BURIED JOINT DETAIL FOR MOVEMENTS UP TO 20mm USED IN CONJUNCTION WITH SHEET OR LIQUID APPLIED WATERPROOF MEMBRANES

1. CLOSED CELL FOAM
2. RADFLEX 125 DOUBLE LAMINATE 225mm WIDE
3. RADFLEX 125 DOUBLE LAMINATE 300mm WIDE
4. RADFLEX 125 DOUBLE LAMINATE 450mm WIDE
5. GALVANISED MILD STEEL PLATE (500mm LONG x 200mm WIDE x 16mm THICK)
6. 16mm CLOSED CELL FOAM
7. HOT POURED RUBBER BITUMEN
8. SHEET OR LIQUID APPLIED WATERPROOFING MEMBRANE
9. COVER STRAP OF WATERPROOFING MEMBRANE
10. CRACK INDUCER FILLED WITH HOT POURED RUBBER BITUMEN 20mm DEEP x 10mm WIDE BY OTHERS
11. SURFACING
12. CONCRETE TO WHICH RADFLEX IS BONDED TO BE FINISHED TO A "U3" STANDARD AND LEVEL ACROSS EXPANSION JOINT GAP



Title:

RADFLEX 125 – BURIED JOINT SYSTEMS

Radflex Contract Services Limited
Unit 35 Wilks Avenue
Questor
Dartford DA1 1JS

Tel: 01322 276363
Fax: 01322 270606
Web: www.radflex.co.uk

Scale: Not to Scale

All dimensions in mm

Drawing No: 125/CI

Standard Details