

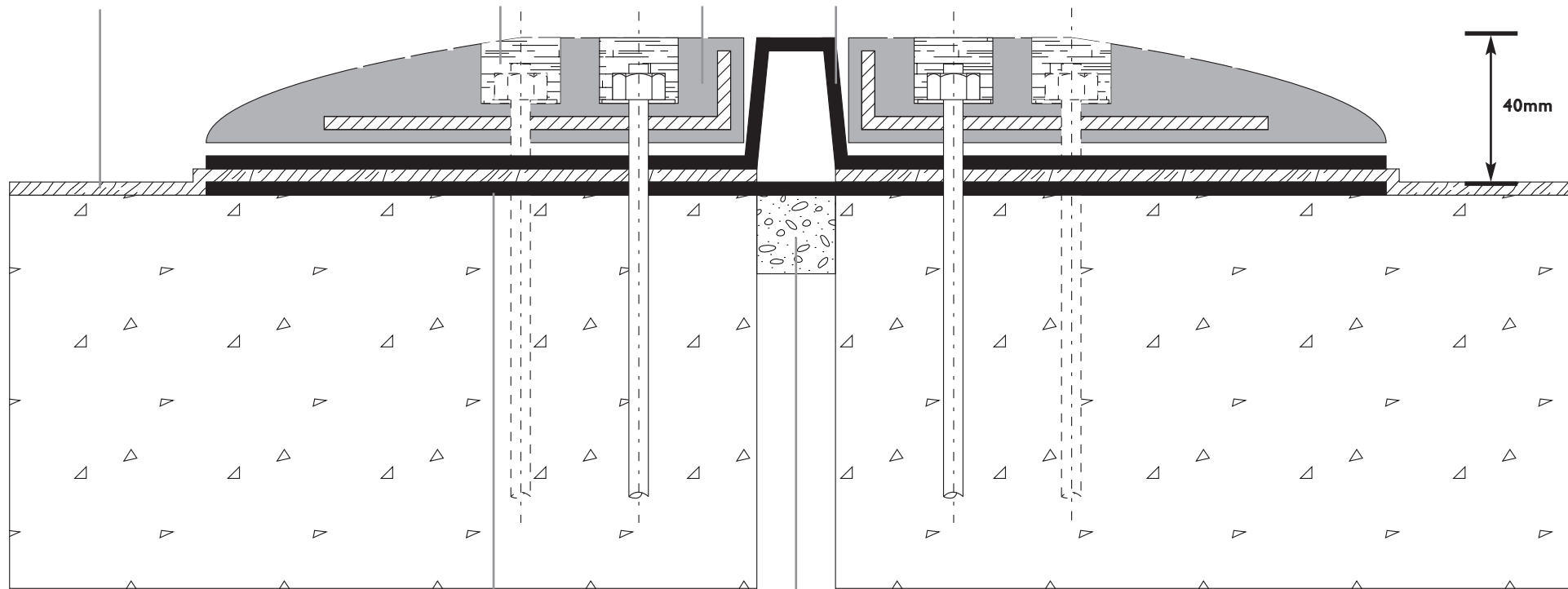
LIQUID APPLIED
WATERPROOF MEMBRANE

SEALANT AND
RUBBER CAP

RADFLEX S150
NOSING

EPDM
EXTRUSION

40mm



RADFLEX I25 DOUBLE LAMINATE BONDED TO
CONCRETE WITH RADFLEX EPOXY ADHESIVE

CLOSED CELL
FOAM



Title:

RADFLEX S150 SURFACE EXPANSION JOINT

Radflex Contract Services Limited
Unit 35 Wilks Avenue
Questor
Dartford DA1 1JS

Tel: 01322 276363
Fax: 01322 270606
Web: www.radflex.co.uk

Scale: Not to Scale

All dimensions in mm

Drawing No: I50/CI

Standard Details